



CORNWALL
COUNCIL
one and all • onen hag oll

Tide Tables 2025

For the Ports of Falmouth,
Truro and Penryn



www.cornwallharbours.co.uk

USE THE WATER SAFELY!



Be seen at night.
Display navigation
lights

Wearing a
killcord saves
lives



Be considerate - Don't
be a hazard to others
with speed or wash



Lifejackets are
useless unless
worn



Car or Boat don't
drink and drive

Harbour Authority Contact Information

Organisation	Phone	Call Sign	VHF
Falmouth Harbour	01326 213537	Falmouth Harbour Radio	12
Truro Harbour	01872 324216	Carrick 1	12
St Mawes Harbour	01326 270553	St Mawes Harbour	12
Falmouth Docks	01326 214666	Spindrift	11

Predictions of Tide Heights are referred uniformly to Chart Datum, which is approximately the level of the lowest spring tides.

GREENWICH MEAN TIME IS QUOTED THROUGHOUT

(Please add one hour for British Summer Time)

PHASES OF THE MOON

Full Moon ○ New Moon ● For other ports add or subtract time specified

Brest	- 1hr. 7 mins.
Bristol (Avonmouth)	+ 1 hr. 58 mins.
Cardiff	+ 1 hr. 42 mins.
Coverack	- 5 mins.
Cherbourg	+2 hrs. 50 mins.
Cork	+35 mins.
Dublin	-5 hrs. 42 mins.
Dartmouth	+58 mins.
Dover	+6 hrs. 2 mins.
Fowey	+18 mins.
Helford River Entrance	-2 mins.
Le Havre	+4 hrs. 55 mins.
Lorient	-1 hr. 19 mins.
Newquay	- 5 mins.
Padstow	+ 5 mins.
Penzance (Newlyn)	- 22 mins.
Portland	+1 hr. 35 mins.
Perranporth	- 10 mins.
Plymouth Breakwater	+ 24 mins.
Roscoff	- 11 mins.
Scillies (St. Mary's)	- 20 mins.
St. Agnes Head	- 11 mins.
St. Ives	- 15 mins.
St. Peter Port	+ 1 hr. 19 mins.
St. Mawes	As Falmouth
Truro	+ 8 mins.
Ushant (Baie de Lampaul)	-1 hr. 5 mins.

Every care is taken in publishing this Tide Table, but the Publishers will not be responsible for any inaccuracies. Tidal information is reproduced by permission of the Controller of Her Majesty's Stationery Office and the UK Hydrographic Office (www.ukho.gov.uk) © Crown copyright. All rights reserved.

Printed by: www.boothsprint.co.uk 01326 373628 Cover Picture: Christopher Jones

Cornwall Harbours Board & Harbour Authority

In 2023 the Cornwall Harbours Harbour Revision Order was made bringing together all of Cornwall's Municipal Harbours under one legal structure. Through an MOU, with Cornwall Council, Cornwall Harbours Board was formed in September 2023. Cornwall Harbours Board, a Harbour Management Committee, is responsible for the operation of all of the municipal ports and harbours in Cornwall which includes Bude, Newquay, Portreath, St Ives, Penzance, Prince of Wales Pier (Falmouth), Penryn, Truro, Portscatho and Portwrinkle. Other assets that the Maritime Service are responsible for include Saltash and Donderry.

Cornwall Harbours Board consists of 12 members, with six being Councillors and six Independent Board members who are appointed following a skills audit. There are also non-voting, co-opted members, who are stakeholder representatives, appointed to it. Cornwall Harbours Board reports to the Full Council who are the Duty Holder.

Our harbours are of a varying size and operation, with some offering commercial facilities and others more related to the fishing industry or leisure market. The principle of the Harbour Revision Order is to create a self-sustaining portfolio of harbours. Our harbours are financed through income generated within the boundaries established in the Harbour Order of each harbour. Any surplus generated across the harbours is deposited into a reserve account that is ring fenced, meaning this can only be spent within the statutory harbour areas.

For more information on Cornwall Harbours Board, including regular news updates please see – www.cornwallharbours.co.uk

Maritime Section, Town Quay, Truro, Cornwall TR1 2HJ

Tel: 01872 324216

Email: harbouroffice@cornwall.gov.uk

Contact details for other harbours can be found at:
www.cornwallharbours.co.uk

Those functions that fall within the duties of a Harbour Authority include:

- **General duties and powers:** For the purposes of the Code, the duty holder should ensure that the harbour authority or organisation discharges its responsibilities for:
- **Safe and efficient port marine operations:** Having regard to the efficiency, economy and safety of operation of the services and facilities provided as well as ensuring that appropriate resources are made available for discharging their marine safety obligations.
- **Open Port duty:** Taking reasonable care, so long as the harbour or facility is open for public use, that all who may choose to navigate in it may do so without danger to their lives or property.
- **Conservancy duty:** Conserving the harbour or facility so that it is fit for use; this duty also includes providing users with adequate information about conditions in the harbour or facility.
- **Revising duties and powers:** The harbour authority should keep its powers and jurisdiction under review and take account of the various mechanisms, such as harbour orders, which are available to amend statutory powers in an authority's local legislation.
- **Environmental duty:** Exercise its applicable functions with regard to nature conservation and other environmental considerations.
- **Civil Contingencies duty:** Take account of the organisation's responsibilities under the Civil Contingencies Act 2004 including planning, preparing and co-ordinating responses to emergencies which threaten serious damage to human welfare, the environment or security.
- **Harbour authority powers:** Harbour authorities must be aware of their statutory powers and responsibilities under both primary and secondary legislation.
- **Powers of Direction:** Powers to direct vessels are available and should be used where appropriate to support safe navigation.
- **Regulation of dangerous vessels and substances:** Dangerous vessels and dangerous substances (including pollution) must be effectively managed.
- **Pilotage:** A pilotage service must be provided if required in the interests of safety as determined by risk assessment.
- **Local lighthouse authorities:** All statutory harbour authorities and some other organisations have duties and powers as local lighthouse authorities. Aids to navigation must be provided (as necessary), properly maintained and any danger to navigation from wrecks, obstructions or changes in the navigable waterway managed effectively.

MOORINGS - General Information

Subletting or non-use of moorings – This is only possible for a maximum period of two years with the prior permission of the Harbour Master. The Harbour Office must be given details of the owner and vessel to be using your mooring. Sub-lets may not be made at a profit, so only the mooring licence fee and an allowance for wear and tear on your mooring equipment may be charged. Managed Moorings (equipment provided by us) may not be sublet under any circumstances.

Siting of moorings – Your mooring contractor must contact our office in order for us to agree where to site your mooring position. The layout and distribution of moorings in the harbour is entirely at the discretion of the Harbour Office and it is an offence under byelaws to position or move a mooring except with the authorisation of the Harbour Office.

Numbering of buoys - It is a requirement of your mooring licence to mark your buoy with your mooring number so that it is clearly visible at all times. Unmarked moorings can be removed from the harbour, and licences revoked.

Changing boats – You must notify us if you intend to change your vessel so that we can update our database and ensure that the type and size of boat is suitable in that present location.

Vessels to have names on them – The Harbour Byelaws require that all vessels should be conspicuously marked with their name or other means of identification.

If you have any queries please contact **Paul Ferris**, Moorings Officer on 01872 324216

MOORING & ANCHORING CHAIN

The best choice for anchoring and mooring chain is short link chain. This is, excluding stud chain, the heaviest and strongest of chains as well as being the most flexible. By definition, short link chain has a link of outside dimensions not exceeding 5 times the material diameter in length and 3.5 times in width necessitating the fitting of large end links by the manufacturer. It should be noted that these are maximum dimensions only and if chain is needed to fit a windlass gypsy wheel it is unlikely that the short link will be suitable. Calibrated chain is designed to be used with a windlass, a manufacturing process involving making the chain deliberately short and then stretching it to its final dimensions.

ADDITIONAL COMPONENTS There is a wide range of other components which could be used in a mooring system and it is important to ensure that

those used are of equivalent strength to the chain. Using components which will fit a chain, with no regard to relative strengths is all too common. As an example, given similar materials, a conventional shackle which will fit directly into short link chain can at best be only about half the strength of the chain. Compatibility of materials is vital too - the problems of dissimilar materials and electrolysis are only too well known.

SHACKLES By far the most popular shackle types are the dees and bows. Dee shackles are usual where two components are to be connected, whereas bow shackles are most suitable as three way connectors. Needless to say, all shackle pins should be 'moused' using galvanised seizing wire.

SWIVELS There are various designs available and the user should ensure that the swivel chosen will accept the correct size shackle or shackle pin. Like shackles, there are two popular types: the chain swivel for joining two components and mooring swivels for joining three. Mooring swivels are designed to take a shackle pin at one end and shackle eyes at the other.

MAINTENANCE Although maintenance should be based on regular inspection, the precise procedure to be followed for any mooring depends on local conditions. If a mooring is exposed to strong tidal conditions and rough weather it will naturally wear more quickly. Normal wear and tear is not, however, the only cause of damage to mooring components. Corrosion, erosion and electrolysis can all be responsible for rapid and dramatic removal of metal. Consequently moorings on new sites need to be monitored carefully until a wear pattern can be established.

If possible moorings should be lifted for winter storage, or alternatively the riser may be sunk and marked with a buoy. Either of these procedures can double a moorings effective life. Another useful tip is to position the swivel, which wears rapidly, at the top of riser, where it can be inspected in situ. Finally, no time should be lost in making an inspection of a mooring where movement has been detected or suspected.

The degree of wear that can be safely permitted before replacement again varies with individual circumstances. A ground chain will often be far larger than strength requirements dictated, as it is bought primarily for its weight. Risers, however, have to be supported by a buoy and so tend to be nearer to the minimum acceptable size. As a guide one should not allow more than 15% reduction below the chain diameter. Remember that the ends of a link wear more rapidly. Badly rusted chain should never be used, particularly if the surface has been removed to expose the grain of the metal.

Truro Tidal Barrier

To alleviate flooding in Truro, the Environment Agency installed a tidal barrier at the northern end of Lighterage Quay. In 2024 the flood gates were replaced led by construction company Kier. The project consisted of new mitre gates, control systems, hydraulics and control tower. The project also saw the installation of a silt clearance system and improved fendering. The structure is marked by lateral lights both upstream and downstream. When tide levels are expected to reach or exceed 5.4m (Falmouth Datum) the gate will be close by single pair of mitre gates. The gates operation may be owing to astronomically predicted tides, meteorological surge or a combination of both. The gates will generally be closed to all traffic for a period of up to 2 hours 20 minutes before and after high water but the actual duration of the closure will vary, depending on the quantity of rainfall run off expected in the rivers Kenwyn and Allen. During periods of closure the water level upstream of the barrier will slowly rise owing to the inflow of water from rivers Kenwyn and Allen, however it will not be less than 4.3m (Falmouth Datum).



Three flashing red traffic control signals indicate the barrier is closed.

Environment Agency Incident Hotline 0800 807060

USE OF LIQUIFIED PETROLEUM GAS (LPG) ON PLEASURE CRAFT – EXPLOSIONS, FIRES AND ACCIDENTS RESULTING FROM GAS LEAKS

- Fire, explosion and asphyxiation are the possible dangers from LPG use on vessels due to leakage of gas, defective fittings, flame failure or inappropriate installation.
- Gas is heavier than air and may accumulate in bilges and other non- ventilated spaces. Even without ignition it may asphyxiate occupants of vessels.
- Gas canisters and bottles should be stored in lockers that are ventilated to the outside in case of leaks, preferably on deck. Provision of an automatic gas detector and alarm is advised.
- All piping leading into the vessel should be approved rigid copper or stainless steel tube construction with appropriate fittings. Necessary flexible lengths of tubing should be as short as possible and comply with the appropriate British Standard.
- There are a number of issues regarding solid fuel stoves which boat owners should be aware of including the risk of carbon monoxide poisoning and the potential for fire caused by the significant heat thrown out by these appliances. You are advised to seek advice from the very useful website www.boatsafetyscheme.org/ Stay Safe on how to avoid fires afloat and how to make your own fire action plan.



CORNWALL
FIRE & RESCUE SERVICE
A service of Cornwall Council

Avoiding Fire Afloat

What to do if fire breaks out...

Act quickly - have everybody ready to leave the craft and get them off the boat as soon as you can

Call the Fire and Rescue Service - we'll need your location, use landmarks if possible

Turn off gas cylinders valves and close any fuel system valves that are safe to reach

Warn the occupants of adjacent craft, the harbour navigation authority and marina staff as appropriate
Remember the risk of accidents happening is greater when alcohol has been consumed

If in doubt get out, stay out, dial 999

For free fire safety advice call 0800 3581 999 or visit our website for more information:

www.cornwall.gov.uk/fire

Carbon Monoxide Detector – The Silent Killer

If you have any fuel burning appliances aboard, an engine or generator, fit a suitable audible carbon monoxide alarm meeting BS EN 50291 -2 for an added re-assurance.



CRIME DOESN'T RESPECT OUR BORDERS

IF YOU SEE ANYTHING SUSPICIOUS
ABOUT WHERE, WHEN OR HOW A VESSEL
AND CREW ARE OPERATING. REPORT IT.

Call the Police on 101, quote **KRAKEN**

You can contact Crimestoppers anonymously on 0800 555 111
In an emergency always dial 999



Border Force



NCA



NPCC

Crimestoppers is an independent charity



The Fal and Helford Estuaries Special Area of Conservation (SAC) is a particularly precious environment, known for its beaches and bays with seagrass beds, sandy gravels, reefs and maerl (calcified seaweed). The sheltered upper reaches with extensive mudflats are important for feeding wading birds and schools of young fish. An integral part of our lives; valuable for tourism, fishing and shellfisheries. *This marine life affects our life.* These waterways are busy places, take care when in this environment not to pollute, disturb or otherwise endanger marine habitats and wildlife. The SAC Management Forum have created this guide to a code of practice especially for this area.



Scan the QR code to the Fal and Helford MPA page for resources to help care for the SAC, including the Environmental Code of Practice for the Ports of Falmouth, Truro, Penryn and St Mawes.

Susan.1.scott@cornwall.gov.uk





HELPING YOU TO MAKE SUSTAINABLE BOATING SIMPLE!

From The Green Blue, the environmental awareness programme from the Royal Yachting Association.



Check the engine for leaks to prevent an oily bilge. Use a bilge sock or inline bilge filter to absorb any pollutants before bilge water is discharged.



Use shore based toilets when berthed. Install a holding tank and use pump out facilities to empty sewage. Avoid discharging the heads in or close to bathing waters or enclosed areas such as harbours, marinas where there is low flushing.



Anchor with care. Use existing mooring buoys if available, if not deploy and lift your anchor correctly to avoid drag and scouring.



Regularly use your boat to limit fouling, lift out, clean and antifoul regularly to prevent the spread of invasive plants and animals. Use a washdown system to ensure fouling does not re-enter the water or collect and put it in a bin.



Navigate slowly, quietly and keep your distance around wildlife to minimise the risk of disturbance that can disrupt feeding, breeding and resting patterns.



Make The Green Blue Boating Pledge to Respect, Protect and Enjoy our waters.

thegreenblue.org.uk/boating-pledge/





Lifeboats

**If you're struggling
in the water ...**

**Tilt your head back with
ears submerged**

**Relax and move
your hands to help
you stay afloat**

Remember it. Share it.

FLOAT TO LIVE


#RESPECTTHEWATER

The RNLI is the charity that saves lives at sea

The Royal National Lifeboat Institution, a charity registered in England and Wales (209003), Scotland (SC037796), the Republic of Ireland (CHI 2078 and 2000 9326), the Bailiwick of Jersey (14), the Isle of Man (1508 and 0063204), the Bailiwick of Guernsey and Alderney, of West Quay Road, Poole, Dorset, BH15 1JZ

SAILING CLUBS

HELDFORD RIVER SAILING CLUB

Office Tel: 01326 231006

E-mail: admin@helfordriversc.co.uk

Clubhouse Tel: 01326 231606

E-mail: helfordriversc@gmail.com

Website: www.helfordriversc.co.uk

Facebook: Helford River Sailing Club

ROYAL CORNWALL YACHT CLUB

Tel: 01326 312126

E-mail: admin@royalcornwallyachtclub.org

Website: www.royalcornwallyachtclub.org

Facebook: The Royal Yacht Club

MYLOR YACHT CLUB

Tel: 01326 374391

E-mail: manager@mylor yachtclub.org.uk

Website: www.mylor yachtclub.org.uk

Facebook: Mylor Yacht Club

ST. MAWES SAILING CLUB

Tel: 01326 270686

E-mail: office@stmawessailing.co.uk

Website: www.stmawessailing.co.uk

Facebook: St Mawes Sailing Club

RESTRONGUET SAILING CLUB

Clubhouse Tel: 01326 374536

Administrator Tel: 07952 157316

E-mail: RSCsteward@outlook.com

Website: www.restronguetsc.org

Facebook: Restronguet Sailing Club

FLUSHING SAILING CLUB

Tel: 01326 375980

E-mail: info@flushingsailingclub.co.uk

Website: www.flushingsailingclub.co.uk

Facebook: Flushing Sailing Club

TRURO BOAT OWNERS ASSOCIATION

Tel: 07961 925156

E-mail: tboacontact@aol.com

Website: www.tboa.org.uk

Facebook: Truro Boating Association

MARITIME EVENTS AND REGATTAS 2025

Pilot Cutter Review

28th May – 2nd June

www.classic-sailing.co.uk

St Mawes Town Regatta

26th July

www.pofsa.co.uk

Point & Penpol Regatta

12th July

www.pofsa.co.uk

**Falmouth Working Boat
Championships**

27th – 29th June

www.falmouthworkingboats.btck.co.uk

Falmouth Classics Regatta

13th – 15th June

www.falmouthclassics.org.uk

Falmouth Week

8th – 17th August

www.falmouthweek.co.uk

**Falmouth International Sea
Shanty Festival**

13th – 15th June

www.falmouthseashanty.co.uk

Falmouth Oyster Festival

9th – 12th October

www.falmouthoysterfestival.co.uk

Fowey Classics Regatta

29th July – 1st August

www.foweyclassics.com

Portscatho Regatta

23rd August

www.pofsa.co.uk

Loe Beach Regatta

7th June

www.pofsa.co.uk

Percuil Regatta

24th August

www.pofsa.co.uk

St Mawes Social Club Regatta

5th July

www.pofsa.co.uk

Fowey Royal Regatta week

17th – 23rd August

www.foweyregatta.co.uk

Flushing Village Regatta

2nd August

www.pofsa.co.uk

Charlestown Regatta Week

2nd – 8th August

www.charlestownregatta.org

SWIMMERS - BE SEEN BY BOATS



The sea is shared
Wear a bright swim hat

Consider a towfloat in high boat traffic
areas or when swimming off shore

Swim happy, swim safe.

Let lifeguards know your swim plans for longer swims.

www.outdoorswimmingsociety.com/survive

#outdoorswimmingsociety #sharetheswimlove

The
Outdoor
Swimming
Society



TRURO BOAT SERVICES

Truro Boat Services is an independent marine business working with boat owners in Cornwall.

Services include:

- **Inboard and outboard engine servicing and repairs.**
- **Boat cleaning and antifouling.**
- **Innovative water recycling system.**
- **Lifting of vessels in Newham, Truro.**
- **Boat Storage.**

Contact us:

07980 731193

contact@truroboatservices.com

truroboatservices.com



ambipar[®]

response

- ◆ Accredited MCA Oil Spill Response Training
- ◆ Accredited HNS Training
- ◆ Incident Management Training
- ◆ Sediment Control Services
- ◆ Environmental & Preparedness Consultancy
- ◆ 24/7 Marine Response Services



General enquiries: +44 (0) 203 981 4388

Mobilisation number: + 44 (0) 1202 653 558 

sales.response@ambipar.com



FALMOUTH HARBOUR MARINE SERVICES MOBILE MARINE ENGINEERING AND DIESEL FUEL CLEANING

Inboard Engine
Installation, Servicing,
Repair, Maintenance,
Welding & Fabrication

**Marine Fuel Cleaning
& Domestic
Heating Oil Cleaning/
Polishing**

**Tel +44 (0)1326 315795
Mobile 07968 214226**

15 Polmennor Road
FALMOUTH
Cornwall
TR11 5UX
www.fhms.co.uk
email@fhms.co.uk

*Truly mobile we
come to you
ashore or afloat*



St Just in Roseland, Truro, Cornwall, TR2 5JD

Boat building, repairs and maintenance.

Specialists in rigging. Comprehensive boat care service.

Seasonal and temporary moorings.

Year round boat storage and dry berthing.

9 tonne hoist, 15 tonne slip.

www.pascosboatyard.co.uk

office@pascosboatyard.co.uk

01326270269

07828184999

Date	HEIGHTS ABOVE CHART DATUM							
	High Water				Low Water			
	Morning		Afternoon		Morning		Afternoon	
	Time	m	Time	m	Time	m	Time	m
1 W	05 58	5.0	18 22	4.8	00 08	0.9	12 33	0.8
2 TH	06 38	5.1	19 04	4.7	00 49	0.8	13 14	0.7
3 F	07 19	5.1	19 45	4.7	01 29	0.8	13 55	0.7
4 SA	08 01	5.0	20 27	4.6	02 10	0.9	14 37	0.8
5 SU	08 45	4.9	21 13	4.5	02 52	0.9	15 21	0.9
6 M ☽	09 34	4.8	22 05	4.4	03 38	1.1	16 10	1.1
7 TU	10 29	4.6	23 06	4.2	04 30	1.3	17 06	1.3
8 W	11 32	4.4			05 30	1.4	18 10	1.4
9 TH	00 14	4.2	12 44	4.3	06 40	1.5	19 23	1.4
10 F	01 31	4.2	14 02	4.3	07 59	1.5	20 40	1.4
11 SA	02 42	4.4	15 11	4.4	09 17	1.3	21 49	1.2
12 SU	03 41	4.6	16 09	4.5	10 23	1.1	22 49	1.0
13 M ○	04 32	4.8	16 59	4.7	11 19	0.8	23 41	0.8
14 TU	05 18	5.0	17 45	4.7			12 09	0.7
15 W	06 01	5.1	18 26	4.8	00 26	0.7	12 52	0.6
16 TH	06 40	5.1	19 04	4.8	01 07	0.7	13 31	0.6
17 F	07 17	5.1	19 39	4.7	01 43	0.7	14 06	0.7
18 SA	07 52	5.0	20 13	4.6	02 15	0.9	14 36	0.9
19 SU	08 26	4.8	20 48	4.5	02 44	1.1	15 05	1.1
20 M	08 59	4.6	21 24	4.3	03 11	1.3	15 32	1.3
21 TU ☾	09 37	4.4	22 06	4.1	03 38	1.5	16 03	1.6
22 W	10 23	4.2	23 00	4.0	04 15	1.7	16 47	1.8
23 TH	11 21	4.0			05 10	2.0	17 54	2.0
24 F	00 05	3.9	12 30	3.9	06 33	2.1	19 17	1.9
25 SA	01 22	3.9	13 50	4.0	07 55	1.9	20 29	1.8
26 SU	02 38	4.2	15 03	4.2	09 02	1.7	21 29	1.5
27 M	03 33	4.5	15 57	4.4	09 59	1.4	22 21	1.2
28 TU	04 18	4.7	16 42	4.6	10 50	1.0	23 11	0.9
29 W ●	04 59	5.0	17 25	4.8	11 38	0.8	23 57	0.7
30 TH	05 41	5.1	18 08	4.9			12 23	0.5
31 F	06 23	5.3	18 50	4.9	00 40	0.5	13 05	0.4

Date		HEIGHTS ABOVE CHART DATUM							
		High Water				Low Water			
		Morning		Afternoon		Morning		Afternoon	
		Time	m	Time	m	Time	m	Time	m
1	SA	07 05	5.3	19 30	5.0	01 20	0.4	13 45	0.3
2	SU	07 45	5.3	20 07	4.9	01 59	0.4	14 23	0.4
3	M	08 25	5.2	20 44	4.7	02 36	0.5	15 01	0.6
4	TU	09 05	4.9	21 25	4.5	03 15	0.7	15 41	0.8
5	W ☽	09 50	4.6	22 17	4.3	03 59	1.0	16 28	1.2
6	TH	10 49	4.3	23 29	4.0	04 53	1.4	17 26	1.5
7	F			12 13	4.0	06 02	1.7	18 44	1.8
8	SA	01 08	4.0	13 52	3.9	07 35	1.8	20 27	1.7
9	SU	02 32	4.1	15 08	4.1	09 17	1.5	21 48	1.4
10	M	03 33	4.4	16 03	4.3	10 23	1.2	22 45	1.1
11	TU	04 22	4.7	16 49	4.6	11 14	0.8	23 33	0.8
12	W ○	05 04	4.9	17 29	4.7	11 59	0.6		
13	TH	05 43	5.1	18 06	4.8	00 14	0.6	12 38	0.5
14	F	06 20	5.1	18 41	4.9	00 51	0.5	13 12	0.4
15	SA	06 55	5.1	19 14	4.9	01 22	0.6	13 41	0.5
16	SU	07 28	5.1	19 46	4.8	01 49	0.7	14 05	0.7
17	M	07 57	4.9	20 14	4.7	02 11	0.9	14 24	0.9
18	TU	08 23	4.7	20 39	4.5	02 29	1.1	14 43	1.1
19	W	08 49	4.5	21 05	4.3	02 51	1.3	15 08	1.4
20	TH ☾	09 21	4.2	21 49	4.0	03 22	1.5	15 42	1.6
21	F	10 21	4.0	23 04	3.9	04 05	1.8	16 34	1.9
22	SA	11 41	3.8			05 16	2.1	18 09	2.1
23	SU	00 24	3.8	13 05	3.8	07 08	2.1	19 52	2.0
24	M	01 51	4.0	14 33	4.0	08 33	1.8	21 03	1.6
25	TU	03 02	4.4	15 34	4.4	09 36	1.4	22 01	1.2
26	W	03 51	4.7	16 20	4.7	10 31	0.9	22 53	0.9
27	TH	04 35	5.0	17 03	4.9	11 20	0.6	23 40	0.5
28	F ●	05 18	5.3	17 46	5.1			12 06	0.3

Time Zone UT(GMT)

All times are G.M.T.
for non-shaded areas add 1 hour

Date	HEIGHTS ABOVE CHART DATUM							
	High Water				Low Water			
	Morning		Afternoon		Morning		Afternoon	
	Time	m	Time	m	Time	m	Time	m
1 SA	06 02	5.4	18 28	5.2	00 23	0.3	12 47	0.1
2 SU	06 45	5.5	19 07	5.2	01 04	0.1	13 26	0.0
3 M	07 25	5.4	19 43	5.1	01 41	0.1	14 02	0.2
4 TU	08 02	5.2	20 17	4.9	02 16	0.3	14 37	0.4
5 W	08 38	4.9	20 53	4.7	02 53	0.6	15 14	0.8
6 TH ☽	09 18	4.5	21 41	4.3	03 33	1.0	15 56	1.3
7 F	10 15	4.0	22 53	4.0	04 25	1.4	16 54	1.7
8 SA			12 01	3.7	05 37	1.8	18 18	2.0
9 SU	00 57	3.8	13 50	3.7	07 38	1.9	20 31	1.9
10 M	02 21	4.1	15 00	4.0	09 17	1.5	21 42	1.5
11 TU	03 19	4.4	15 50	4.3	10 12	1.1	22 32	1.1
12 W	04 03	4.7	16 29	4.6	10 57	0.7	23 14	0.8
13 TH	04 42	4.9	17 05	4.8	11 37	0.5	23 52	0.6
14 F ☉	05 19	5.1	17 39	4.9			12 13	0.4
15 SA	05 55	5.1	18 14	5.0	00 25	0.5	12 44	0.4
16 SU	06 29	5.1	18 47	5.0	00 54	0.5	13 10	0.5
17 M	07 00	5.0	19 17	4.9	01 18	0.6	13 30	0.7
18 TU	07 27	4.9	19 41	4.7	01 37	0.8	13 47	0.9
19 W	07 50	4.7	19 58	4.6	01 55	1.0	14 06	1.1
20 TH	08 05	4.5	20 10	4.4	02 18	1.1	14 31	1.3
21 F	08 18	4.2	20 40	4.2	02 48	1.4	15 04	1.6
22 SA ☾	09 15	3.9	22 17	3.9	03 28	1.7	15 49	1.9
23 SU	11 07	3.7	23 44	3.9	04 31	2.0	17 14	2.2
24 M			12 33	3.8	06 29	2.0	19 16	2.1
25 TU	01 08	4.0	13 58	4.0	08 03	1.7	20 35	1.7
26 W	02 23	4.4	15 03	4.4	09 10	1.3	21 36	1.2
27 TH	03 18	4.8	15 51	4.7	10 05	0.8	22 28	0.8
28 F	04 06	5.1	16 35	5.0	10 55	0.4	23 16	0.4
29 SA ●	04 52	5.3	17 19	5.2	11 41	0.2		
30 SU	05 38	5.5	18 02	5.3	00 01	0.1	12 24	-0.0
31 M	06 22	5.5	18 43	5.3	00 42	0.0	13 03	0.0

APRIL 2025

FALMOUTH

Date	HEIGHTS ABOVE CHART DATUM							
	High Water				Low Water			
	Morning		Afternoon		Morning		Afternoon	
	Time	m	Time	m	Time	m	Time	m
1 TU	07 04	5.4	19 20	5.2	01 20	0.0	13 40	0.2
2 W	07 43	5.1	19 55	5.0	01 57	0.2	14 16	0.5
3 TH	08 20	4.8	20 33	4.7	02 34	0.6	14 53	0.9
4 F	09 01	4.3	21 22	4.3	03 17	1.0	15 37	1.4
5 SA ☽	10 02	3.9	22 37	4.0	04 10	1.5	16 37	1.8
6 SU			12 03	3.6	05 26	1.8	18 04	2.0
7 M	00 41	3.9	13 36	3.7	07 33	1.8	20 12	1.9
8 TU	01 58	4.1	14 39	4.0	08 54	1.5	21 16	1.5
9 W	02 53	4.4	15 23	4.3	09 45	1.1	22 03	1.1
10 TH	03 36	4.6	16 00	4.6	10 27	0.8	22 44	0.8
11 F	04 14	4.8	16 35	4.8	11 05	0.6	23 20	0.7
12 SA	04 50	4.9	17 09	4.9	11 39	0.5	23 53	0.6
13 SU ○	05 26	5.0	17 44	4.9			12 09	0.6
14 M	06 01	4.9	18 18	4.9	00 22	0.6	12 35	0.7
15 TU	06 32	4.9	18 47	4.9	00 47	0.7	12 57	0.8
16 W	07 00	4.7	19 11	4.8	01 07	0.8	13 17	0.9
17 TH	07 23	4.6	19 31	4.6	01 29	1.0	13 40	1.1
18 F	07 43	4.4	19 52	4.5	01 55	1.1	14 07	1.3
19 SA	08 07	4.2	20 34	4.3	02 27	1.3	14 42	1.5
20 SU	09 18	4.0	21 55	4.1	03 10	1.6	15 30	1.8
21 M ☾	10 44	3.8	23 15	4.0	04 15	1.8	16 53	2.0
22 TU			12 03	3.9	05 59	1.9	18 40	1.9
23 W	00 31	4.2	13 20	4.1	07 26	1.6	19 58	1.6
24 TH	01 42	4.5	14 24	4.4	08 34	1.2	21 01	1.1
25 F	02 43	4.8	15 17	4.8	09 32	0.8	21 57	0.8
26 SA	03 35	5.1	16 04	5.0	10 24	0.5	22 48	0.4
27 SU ●	04 24	5.3	16 50	5.2	11 13	0.2	23 35	0.2
28 M	05 13	5.4	17 36	5.3	11 59	0.1		
29 TU	06 01	5.3	18 20	5.3	00 20	0.1	12 41	0.2
30 W	06 47	5.2	19 02	5.2	01 02	0.2	13 22	0.3

Time Zone UT(GMT)

All times are G.M.T.
for non-shaded areas add 1 hour

Date	HEIGHTS ABOVE CHART DATUM							
	High Water				Low Water			
	Morning		Afternoon		Morning		Afternoon	
	Time	m	Time	m	Time	m	Time	m
1 TH	07 30	4.9	19 43	5.0	01 43	0.4	14 01	0.6
2 F	08 12	4.6	20 25	4.7	02 24	0.7	14 42	1.0
3 SA	08 58	4.3	21 15	4.4	03 10	1.1	15 30	1.4
4 SU ☽	10 03	3.9	22 26	4.1	04 06	1.4	16 30	1.7
5 M	11 42	3.7			05 16	1.7	17 44	1.9
6 TU	00 06	4.0	13 01	3.8	06 43	1.7	19 11	1.8
7 W	01 20	4.1	14 00	4.0	08 04	1.5	20 26	1.6
8 TH	02 15	4.3	14 46	4.3	09 00	1.2	21 18	1.3
9 F	03 01	4.5	15 25	4.5	09 44	1.0	22 01	1.1
10 SA	03 41	4.6	16 01	4.7	10 23	0.9	22 40	0.9
11 SU	04 19	4.7	16 38	4.8	10 59	0.8	23 15	0.9
12 M ○	04 56	4.8	17 14	4.8	11 32	0.8	23 48	0.9
13 TU	05 32	4.8	17 49	4.8			12 02	0.9
14 W	06 06	4.7	18 20	4.8	00 17	0.9	12 29	0.9
15 TH	06 37	4.6	18 49	4.7	00 44	0.9	12 56	1.0
16 F	07 08	4.5	19 18	4.7	01 12	1.0	13 25	1.1
17 SA	07 40	4.4	19 53	4.6	01 44	1.1	13 58	1.3
18 SU	08 19	4.3	20 39	4.4	02 22	1.3	14 37	1.5
19 M	09 15	4.1	21 40	4.3	03 09	1.4	15 30	1.6
20 TU ☾	10 22	4.0	22 48	4.3	04 13	1.6	16 42	1.7
21 W	11 33	4.1	23 57	4.4	05 31	1.6	18 02	1.7
22 TH			12 42	4.2	06 45	1.4	19 15	1.4
23 F	01 04	4.6	13 45	4.5	07 53	1.1	20 21	1.2
24 SA	02 08	4.8	14 43	4.7	08 55	0.9	21 22	0.9
25 SU	03 06	4.9	15 36	4.9	09 52	0.7	22 19	0.6
26 M	04 00	5.1	16 26	5.1	10 46	0.5	23 12	0.5
27 TU ●	04 53	5.1	17 16	5.2	11 37	0.4		
28 W	05 46	5.1	18 05	5.2	00 02	0.4	12 25	0.4
29 TH	06 36	5.0	18 51	5.1	00 50	0.4	13 10	0.6
30 F	07 23	4.8	19 35	5.0	01 36	0.5	13 54	0.7
31 SA	08 08	4.6	20 19	4.8	02 21	0.7	14 38	1.0

Date	HEIGHTS ABOVE CHART DATUM							
	High Water				Low Water			
	Morning		Afternoon		Morning		Afternoon	
	Time	m	Time	m	Time	m	Time	m
1 SU	08 54	4.3	21 06	4.6	03 07	1.0	15 24	1.2
2 M	09 46	4.1	22 01	4.4	03 56	1.2	16 15	1.5
3 TU ☽	10 51	4.0	23 07	4.2	04 51	1.4	17 10	1.7
4 W	11 59	3.9			05 49	1.6	18 10	1.7
5 TH	00 17	4.1	13 02	4.0	06 50	1.6	19 13	1.7
6 F	01 21	4.2	13 56	4.1	07 51	1.5	20 13	1.6
7 SA	02 15	4.3	14 43	4.3	08 45	1.4	21 07	1.4
8 SU	03 03	4.4	15 27	4.5	09 33	1.3	21 54	1.3
9 M	03 46	4.5	16 08	4.6	10 15	1.1	22 37	1.2
10 TU	04 27	4.6	16 47	4.7	10 55	1.1	23 16	1.1
11 W ☉	05 07	4.6	17 24	4.8	11 32	1.0	23 53	1.0
12 TH	05 44	4.6	17 58	4.8			12 08	1.0
13 F	06 21	4.6	18 33	4.8	00 28	1.0	12 43	1.0
14 SA	06 58	4.6	19 09	4.8	01 04	1.0	13 19	1.1
15 SU	07 35	4.5	19 47	4.8	01 42	1.0	13 57	1.1
16 M	08 15	4.4	20 31	4.7	02 23	1.1	14 39	1.2
17 TU	09 02	4.4	21 22	4.6	03 09	1.1	15 27	1.3
18 W ☾	09 57	4.3	22 20	4.6	04 02	1.2	16 24	1.4
19 TH	10 58	4.3	23 23	4.5	05 01	1.3	17 26	1.4
20 F			12 02	4.3	06 05	1.3	18 32	1.4
21 SA	00 28	4.5	13 09	4.4	07 11	1.2	19 41	1.3
22 SU	01 37	4.6	14 15	4.5	08 19	1.1	20 50	1.1
23 M	02 44	4.7	15 17	4.7	09 24	1.0	21 56	0.9
24 TU	03 46	4.8	16 12	4.9	10 26	0.9	22 58	0.8
25 W ●	04 43	4.8	17 05	5.0	11 24	0.8	23 54	0.6
26 TH	05 37	4.9	17 55	5.1			12 17	0.7
27 F	06 28	4.8	18 42	5.1	00 45	0.5	13 05	0.7
28 SA	07 14	4.8	19 25	5.1	01 32	0.5	13 48	0.7
29 SU	07 56	4.7	20 06	5.0	02 15	0.6	14 29	0.8
30 M	08 35	4.5	20 45	4.8	02 55	0.8	15 08	1.0

Time Zone UT(GMT)

All times are G.M.T.
for non-shaded areas add 1 hour

Date	HEIGHTS ABOVE CHART DATUM							
	High Water				Low Water			
	Morning		Afternoon		Morning		Afternoon	
	Time	m	Time	m	Time	m	Time	m
1 TU	09 14	4.4	21 25	4.6	03 34	1.0	15 47	1.3
2 W ☽	09 57	4.2	22 09	4.4	04 14	1.3	16 29	1.5
3 TH	10 45	4.1	23 00	4.2	04 58	1.5	17 16	1.7
4 F	11 42	4.0	23 59	4.1	05 47	1.7	18 11	1.8
5 SA			12 47	4.0	06 44	1.8	19 13	1.9
6 SU	01 08	4.0	13 54	4.1	07 45	1.7	20 15	1.8
7 M	02 19	4.1	14 53	4.3	08 44	1.6	21 12	1.6
8 TU	03 16	4.3	15 41	4.5	09 37	1.5	22 04	1.4
9 W	04 03	4.4	16 24	4.7	10 24	1.3	22 51	1.2
10 TH ○	04 46	4.5	17 03	4.8	11 10	1.2	23 35	1.1
11 F	05 27	4.6	17 40	4.9	11 53	1.0		
12 SA	06 08	4.7	18 19	5.0	00 17	0.9	12 34	0.9
13 SU	06 47	4.7	18 57	5.0	00 57	0.8	13 14	0.9
14 M	07 26	4.7	19 36	5.1	01 37	0.8	13 52	0.9
15 TU	08 04	4.7	20 17	5.0	02 17	0.8	14 32	0.9
16 W	08 43	4.6	21 00	4.9	02 57	0.8	15 13	1.0
17 TH	09 27	4.5	21 49	4.8	03 41	0.9	15 59	1.1
18 F ☾	10 20	4.4	22 47	4.6	04 30	1.1	16 52	1.3
19 SA	11 24	4.3	23 56	4.4	05 27	1.3	17 55	1.5
20 SU			12 41	4.3	06 33	1.5	19 09	1.5
21 M	01 17	4.3	14 01	4.4	07 51	1.5	20 33	1.4
22 TU	02 37	4.3	15 10	4.6	09 11	1.4	21 51	1.2
23 W	03 43	4.5	16 07	4.8	10 21	1.1	22 56	0.9
24 TH ●	04 38	4.7	16 57	5.0	11 20	0.9	23 51	0.7
25 F	05 29	4.8	17 44	5.1			12 11	0.7
26 SA	06 15	4.9	18 27	5.2	00 38	0.5	12 56	0.6
27 SU	06 55	4.9	19 06	5.2	01 21	0.4	13 35	0.6
28 M	07 32	4.8	19 42	5.1	01 58	0.5	14 10	0.7
29 TU	08 05	4.8	20 16	5.0	02 31	0.7	14 41	0.9
30 W	08 38	4.6	20 48	4.8	03 01	0.9	15 10	1.1
31 TH	09 12	4.5	21 22	4.5	03 29	1.2	15 38	1.4

Date	HEIGHTS ABOVE CHART DATUM							
	High Water				Low Water			
	Morning		Afternoon		Morning		Afternoon	
	Time	m	Time	m	Time	m	Time	m
1 F ☽	09 50	4.3	22 02	4.3	03 58	1.5	16 10	1.7
2 SA	10 37	4.1	22 55	4.0	04 35	1.8	16 56	2.0
3 SU	11 37	4.0			05 31	2.0	18 09	2.1
4 M	00 01	3.9	12 53	4.0	06 49	2.1	19 30	2.1
5 TU	01 26	3.9	14 19	4.2	08 03	1.9	20 40	1.9
6 W	02 51	4.1	15 18	4.4	09 06	1.7	21 38	1.6
7 TH	03 45	4.4	16 03	4.7	10 01	1.4	22 30	1.2
8 F	04 28	4.6	16 42	4.9	10 51	1.2	23 18	1.0
9 SA ○	05 08	4.8	17 20	5.1	11 38	0.9		
10 SU	05 50	4.9	18 00	5.2	00 02	0.7	12 20	0.7
11 M	06 30	5.0	18 40	5.3	00 44	0.6	13 00	0.6
12 TU	07 08	5.0	19 20	5.3	01 23	0.5	13 38	0.5
13 W	07 45	5.0	19 58	5.2	02 00	0.5	14 15	0.6
14 TH	08 20	4.9	20 36	5.1	02 37	0.6	14 52	0.8
15 F	08 57	4.7	21 19	4.8	03 15	0.8	15 33	1.0
16 SA ☾	09 45	4.5	22 14	4.4	03 59	1.1	16 22	1.4
17 SU	10 52	4.2	23 34	4.1	04 53	1.5	17 27	1.7
18 M			12 28	4.1	06 05	1.8	18 53	1.8
19 TU	01 18	4.0	14 00	4.2	07 42	1.8	20 43	1.7
20 W	02 41	4.2	15 08	4.5	09 18	1.6	21 57	1.3
21 TH	03 42	4.4	16 00	4.8	10 22	1.2	22 52	0.9
22 F	04 31	4.7	16 45	5.1	11 13	0.9	23 40	0.6
23 SA ●	05 13	4.9	17 26	5.2	11 58	0.6		
24 SU	05 52	5.0	18 04	5.3	00 22	0.4	12 37	0.5
25 M	06 28	5.0	18 40	5.3	00 59	0.4	13 11	0.5
26 TU	07 01	5.0	19 13	5.2	01 31	0.5	13 41	0.7
27 W	07 33	4.9	19 43	5.0	01 58	0.7	14 07	0.9
28 TH	08 03	4.8	20 11	4.8	02 21	0.9	14 28	1.1
29 F	08 31	4.7	20 39	4.6	02 40	1.2	14 46	1.4
30 SA	09 01	4.4	21 14	4.3	02 59	1.5	15 09	1.6
31 SU ☽	09 43	4.2	22 07	4.0	03 27	1.8	15 47	1.9

Date	HEIGHTS ABOVE CHART DATUM							
	High Water				Low Water			
	Morning		Afternoon		Morning		Afternoon	
	Time	m	Time	m	Time	m	Time	m
1 M	10 46	4.0	23 19	3.8	04 12	2.1	16 52	2.2
2 TU			12 02	3.9	05 46	2.3	18 49	2.3
3 W	00 44	3.8	13 36	4.1	07 30	2.2	20 13	2.0
4 TH	02 28	4.1	14 51	4.4	08 42	1.8	21 16	1.6
5 F	03 23	4.4	15 36	4.8	09 40	1.5	22 09	1.2
6 SA	04 05	4.7	16 16	5.1	10 30	1.1	22 57	0.8
7 SU ○	04 44	4.9	16 55	5.3	11 17	0.8	23 42	0.5
8 M	05 24	5.1	17 36	5.5			12 01	0.5
9 TU	06 05	5.2	18 18	5.5	00 23	0.3	12 40	0.4
10 W	06 44	5.2	18 59	5.5	01 02	0.3	13 18	0.3
11 TH	07 21	5.2	19 37	5.3	01 39	0.3	13 54	0.4
12 F	07 56	5.1	20 15	5.0	02 14	0.5	14 30	0.7
13 SA	08 33	4.8	20 56	4.7	02 51	0.9	15 10	1.0
14 SU ☾	09 21	4.5	21 54	4.2	03 32	1.3	16 00	1.5
15 M	10 33	4.2	23 36	3.9	04 27	1.7	17 10	1.9
16 TU			12 27	4.0	05 49	2.1	19 05	2.0
17 W	01 25	3.9	13 55	4.2	07 58	2.0	20 50	1.6
18 TH	02 40	4.1	14 57	4.6	09 16	1.6	21 48	1.2
19 F	03 33	4.5	15 44	4.9	10 09	1.1	22 35	0.8
20 SA	04 13	4.7	16 24	5.1	10 54	0.8	23 17	0.6
21 SU ●	04 49	4.9	17 01	5.2	11 34	0.6	23 55	0.5
22 M	05 23	5.0	17 36	5.3			12 10	0.5
23 TU	05 56	5.1	18 10	5.2	00 28	0.5	12 41	0.6
24 W	06 29	5.1	18 42	5.1	00 57	0.6	13 08	0.7
25 TH	07 01	5.0	19 11	5.0	01 22	0.8	13 32	0.9
26 F	07 29	4.9	19 38	4.8	01 41	1.0	13 49	1.1
27 SA	07 55	4.7	20 04	4.6	01 58	1.2	14 07	1.3
28 SU	08 21	4.5	20 35	4.3	02 19	1.5	14 33	1.6
29 M ☽	09 01	4.3	21 32	4.0	02 47	1.7	15 09	1.9
30 TU	10 08	4.1	22 50	3.8	03 29	2.1	16 07	2.2

Time Zone UT(GMT)

All times are G.M.T.
for non-shaded areas add 1 hour

Date	HEIGHTS ABOVE CHART DATUM							
	High Water				Low Water			
	Morning		Afternoon		Morning		Afternoon	
	Time	m	Time	m	Time	m	Time	m
1 W	11 25	4.0			04 48	2.3	18 10	2.3
2 TH	00 13	3.8	12 47	4.1	06 55	2.3	19 42	2.0
3 F	01 47	4.1	14 06	4.5	08 13	1.9	20 47	1.5
4 SA	02 49	4.4	15 00	4.8	09 12	1.4	21 41	1.1
5 SU	03 33	4.8	15 44	5.2	10 03	1.0	22 29	0.7
6 M	04 13	5.0	16 27	5.4	10 51	0.7	23 15	0.4
7 TU ○	04 55	5.2	17 11	5.5	11 35	0.4	23 58	0.3
8 W	05 37	5.3	17 55	5.5			12 18	0.3
9 TH	06 19	5.4	18 39	5.4	00 38	0.2	12 57	0.3
10 F	06 59	5.3	19 20	5.2	01 17	0.3	13 35	0.4
11 SA	07 38	5.1	20 01	4.9	01 54	0.6	14 14	0.7
12 SU	08 19	4.9	20 47	4.5	02 32	1.0	14 56	1.1
13 M ☾	09 10	4.5	21 52	4.1	03 16	1.4	15 49	1.6
14 TU	10 26	4.2	23 42	3.8	04 15	1.9	17 06	1.9
15 W			12 15	4.1	05 42	2.1	19 04	1.9
16 TH	01 15	3.9	13 35	4.3	07 41	2.0	20 28	1.5
17 F	02 21	4.2	14 34	4.5	08 51	1.6	21 22	1.2
18 SA	03 08	4.5	15 18	4.8	09 41	1.2	22 06	0.9
19 SU	03 45	4.7	15 57	5.0	10 23	0.9	22 45	0.7
20 M	04 19	4.9	16 32	5.1	11 01	0.7	23 21	0.6
21 TU ●	04 51	5.0	17 07	5.1	11 36	0.7	23 53	0.7
22 W	05 25	5.1	17 41	5.1			12 08	0.7
23 TH	05 59	5.1	18 14	5.0	00 22	0.8	12 36	0.8
24 F	06 31	5.0	18 44	4.9	00 47	0.9	13 00	1.0
25 SA	07 01	4.9	19 12	4.7	01 08	1.1	13 21	1.1
26 SU	07 28	4.8	19 41	4.5	01 29	1.2	13 43	1.3
27 M	07 57	4.6	20 16	4.3	01 54	1.4	14 13	1.5
28 TU	08 38	4.4	21 11	4.1	02 26	1.7	14 52	1.7
29 W ☽	09 40	4.2	22 24	3.9	03 10	2.0	15 50	2.0
30 TH	10 52	4.1	23 40	3.9	04 23	2.2	17 31	2.1
31 F			12 06	4.2	06 11	2.1	18 59	1.8

Date	HEIGHTS ABOVE CHART DATUM							
	High Water				Low Water			
	Morning		Afternoon		Morning		Afternoon	
	Time	m	Time	m	Time	m	Time	m
1 SA	00 57	4.1	13 16	4.5	07 31	1.8	20 08	1.5
2 SU	02 03	4.4	14 18	4.8	08 35	1.4	21 05	1.1
3 M	02 54	4.7	15 10	5.1	09 30	1.0	21 57	0.7
4 TU	03 41	5.0	15 58	5.3	10 21	0.7	22 46	0.5
5 W ☉	04 26	5.2	16 46	5.4	11 09	0.5	23 32	0.4
6 TH	05 12	5.3	17 35	5.4	11 55	0.3		
7 F	05 58	5.4	18 23	5.3	00 16	0.4	12 39	0.3
8 SA	06 43	5.3	19 09	5.1	00 59	0.5	13 22	0.5
9 SU	07 27	5.2	19 55	4.8	01 40	0.7	14 05	0.7
10 M	08 12	4.9	20 45	4.4	02 23	1.0	14 52	1.1
11 TU	09 04	4.6	21 49	4.1	03 10	1.4	15 47	1.4
12 W ☾	10 11	4.4	23 18	3.9	04 08	1.7	16 55	1.7
13 TH	11 38	4.2			05 20	1.9	18 17	1.7
14 F	00 38	3.9	12 54	4.2	06 43	1.9	19 38	1.6
15 SA	01 41	4.1	13 54	4.4	08 00	1.7	20 38	1.4
16 SU	02 30	4.3	14 42	4.6	08 57	1.4	21 25	1.1
17 M	03 10	4.5	15 23	4.7	09 42	1.2	22 05	1.0
18 TU	03 46	4.7	16 02	4.8	10 23	1.0	22 42	0.9
19 W	04 21	4.9	16 39	4.8	11 00	0.9	23 17	0.9
20 TH ●	04 58	5.0	17 15	4.9	11 35	0.9	23 49	0.9
21 F	05 33	5.0	17 50	4.8			12 08	1.0
22 SA	06 08	5.0	18 23	4.7	00 18	1.0	12 36	1.0
23 SU	06 40	4.9	18 56	4.6	00 46	1.1	13 04	1.1
24 M	07 11	4.8	19 29	4.5	01 14	1.2	13 33	1.2
25 TU	07 44	4.7	20 07	4.3	01 44	1.4	14 07	1.4
26 W	08 25	4.6	20 54	4.2	02 20	1.5	14 48	1.5
27 TH	09 16	4.4	21 55	4.1	03 05	1.7	15 42	1.7
28 F ☽	10 19	4.4	23 02	4.1	04 05	1.8	16 53	1.7
29 SA	11 25	4.4			05 23	1.9	18 09	1.7
30 SU	00 10	4.2	12 31	4.5	06 40	1.7	19 21	1.4

Time Zone UT(GMT)

All times are G.M.T.
for non-shaded areas add 1 hour

Date	HEIGHTS ABOVE CHART DATUM							
	High Water				Low Water			
	Morning		Afternoon		Morning		Afternoon	
	Time	m	Time	m	Time	m	Time	m
1 M	01 15	4.3	13 36	4.7	07 50	1.5	20 25	1.2
2 TU	02 16	4.6	14 37	4.8	08 53	1.2	21 24	0.9
3 W	03 11	4.8	15 34	5.0	09 51	0.9	22 18	0.7
4 TH ○	04 03	5.0	16 28	5.1	10 46	0.7	23 11	0.6
5 F	04 54	5.2	17 21	5.1	11 39	0.5		
6 SA	05 44	5.3	18 13	5.1	00 00	0.5	12 28	0.4
7 SU	06 33	5.3	19 02	4.9	00 48	0.6	13 16	0.5
8 M	07 19	5.2	19 49	4.8	01 34	0.7	14 02	0.6
9 TU	08 04	5.0	20 35	4.5	02 19	0.9	14 49	0.8
10 W	08 51	4.8	21 25	4.3	03 04	1.1	15 36	1.1
11 TH ☾	09 41	4.6	22 22	4.1	03 52	1.4	16 28	1.3
12 F	10 39	4.4	23 27	4.0	04 44	1.6	17 23	1.5
13 SA	11 44	4.2			05 42	1.7	18 24	1.6
14 SU	00 33	4.0	12 51	4.2	06 46	1.8	19 27	1.6
15 M	01 34	4.1	13 53	4.2	07 51	1.7	20 27	1.5
16 TU	02 26	4.3	14 46	4.3	08 50	1.6	21 18	1.4
17 W	03 13	4.5	15 32	4.5	09 41	1.4	22 03	1.2
18 TH	03 55	4.6	16 15	4.6	10 26	1.2	22 43	1.1
19 F	04 36	4.8	16 55	4.7	11 07	1.1	23 22	1.1
20 SA ●	05 14	4.9	17 33	4.7	11 45	1.0	23 58	1.0
21 SU	05 50	4.9	18 09	4.7			12 20	1.0
22 M	06 25	4.9	18 45	4.6	00 31	1.0	12 53	1.0
23 TU	06 58	4.9	19 19	4.6	01 05	1.1	13 27	1.0
24 W	07 33	4.9	19 55	4.5	01 40	1.1	14 03	1.1
25 TH	08 09	4.8	20 33	4.4	02 16	1.2	14 42	1.1
26 F	08 51	4.7	21 19	4.3	02 56	1.3	15 26	1.2
27 SA ☽	09 42	4.6	22 16	4.2	03 43	1.4	16 18	1.4
28 SU	10 41	4.5	23 20	4.2	04 40	1.5	17 19	1.5
29 M	11 47	4.4			05 47	1.6	18 29	1.5
30 TU	00 29	4.2	12 57	4.4	07 01	1.5	19 43	1.4
31 W	01 41	4.4	14 11	4.5	08 17	1.4	20 54	1.2



FALMOUTH YACHT SERVICES

Falmouth Yacht Services is the refit and service division of Rustler Yachts, and is established as one of the best refit yards in the South West of England.

Modern purpose built facilities together with a highly skilled team, allow us to offer a full range of services from traditional shipwright work, to the repair or installation of modern electronics and engineering.

Falmouth Yacht Services, Maritime Buildings,
Falmouth Road, Falmouth, Cornwall TR10 8AD

Tel: +44 (0)1326 310 120

Email: fys@rustleryachts.com

www.FalmouthYachtServices.co.uk

Creekside Cottages

Near Falmouth, Cornwall

An exquisite collection of luxurious and individual waterside, rural and village self-catering holiday cottages



www.creeksidecottages.co.uk
martin@creeksidecottages.co.uk
01326 375972



R. Pearce & Co.

Marine Surveyors & Consulting Engineers

Ship Surveyors

MCA code of Practice Surveyors

Condition, Valuation & Insurance Renewal Surveys for all types of vessels including Small Craft, Pleasure Vessels & Yachts

St. Mary's House, Commercial Road,
Penryn, Cornwall TR10 8AG

Tel: 01326 379054

Fax: 01326 369540

Email: admin@rpearce.co.uk



FALMOUTH

BOAT CO.

BOAT CARE EXCELLENCE

FULL SERVICE BOATYARD

**RESPOND
& ASSIST
SERVICE**

**Call us for
urgent assistance**

From dawn until dusk,
7 days a week

Call 01326 374309

**BRITISH
MARINE** 
LEADING THE INDUSTRY

www.falmouthboat.co.uk
enquiries@falmouthboat.co.uk



**Marine
Team**

SERVICE • SALES • REPAIR • REFIT



☎ 01326 372121 ✉ enquiries@mylor.com 🖱 mylor.com

ROBIN CURNOW Est 1968

OUTBOARD MOTOR SPECIALIST



Commercial Road, Penryn,
Cornwall TR10 8AG

E-mail: info@robincurnow.co.uk

Website: www.robincurnow.co.uk

Tel: 01326 373438 **Fax:** 01326 376534

Inflatable Boat Sales

Armada Engineering Hydraulic Foundation Course

Duration: 3 days

Location: Armada Engineering, Falmouth, TR11 4TA

Objectives:

- Understand the basic principles of hydrostatics
- Be able to read ISO symbols and circuit drawings
- Identify the major components of a hydraulic system
- Understand the properties of hydraulic fluid
- Understand filtration and fluid cleanliness
- Learn basic hydraulic maintenance and testing
- To recognise hazards associated with hydraulic systems

Course split between classroom learning and practical exercises completed on a hydraulic training rig

Armada is a BFPA approved training centre and a Cornwall Marine Network Centre of excellence.

Course approved by British Fluid Power Association

£880 (+VAT)
inc BFPA
registration



Training Academy



Unit 3 Bickland industrial Park,
Falmouth,

Cornwall, TR11 4TA

T: 01326 35566

E: enquiries@armadaglobal.co.uk

Course overview:

- 1.0 Basic Principles
- 2.0 Hydraulic symbols ISO1219-1
- 3.0 Pumps
- 4.0 Fluid and energy storage
- 5.0 Pressure Control Valves
- 6.0 Flow Control Valves
- 7.0 Direction Control Valves
- 8.0 Actuators
- 9.0 Contamination control
- 10.0 Hydraulic Fluid
- 11.0 Hydraulic Hose Technology
- 12.0 Maintenance Procedures
- 13.0 Test and Measurement
- 14.0 Health and safety
- 15.0 Skills Based Practical Tasks

Contact for
dates &
further info



Falmouth Divers Ltd

Diving & Marine Civil Engineering Contractors



Tel: +44 (0)1326 374736
Fax: +44 (0)1326 377989
email: office@falmouthdivers.com
www.falmouthdivers.com

MARINE CIVIL
ENGINEERING & SUBSEA
CONTRACTORS

THE MARINE CONSTRUCTION SPECIALISTS

INTERNATIONAL OPERATIONS
COMPLETED IN OVER 65 COUNTRIES
THROUGHOUT THE WORLD

Tidal House, Commercial Road, Penryn,
Cornwall, TR10 8AL



Marine Electrical Services

Tree Tops, Lower Trehaswell, Penryn, Cornwall TR10 9AT



Tel: PENRYN (01326) 378497
or 24 HR EMERGENCY 07929 105506
email: ksgmarinedoctor@btclick.com
www.marine-electrical-services.co.uk

- GENERATORS - REWIRING BOATS
- ALTERNATOR & STARTER MOTORS
- REPAIR & SERVICING
- ELECTRICAL SURVEYS & REPORTS
- 24 HOUR SERVICE



One and All

Proprietor: K.S. GREEN - MARINE TECHNICIAN

Waterfront House, Malpas, Truro

T: 01872 561642

cornwall 
hideaways

coastal and country holiday retreats

E: enquiries@cornwallhideaways.co.uk

W: www.cornwallhideaways.co.uk

S: Facebook | Instagram | Twitter



David Cox Marine Surveyors & Consultants Ltd

David Cox M.Sc. MRINA MYDSA

Established 1986

Claims investigation

Consultancy for Timber, GRP and Ferro construction.

Office

Halvosso Farm

Mabe, Penryn

Cornwall TR10 9BY

Mobile: 07970 444247

davidhalvosso@icloud.com



FUEL SPECIALIST SERVICES LTD

AVIATION, MARITIME & INDUSTRIAL FUEL SOLUTIONS

INNOVATION THROUGH ENGINEERING

Marine Services

- o Tank & Bilge Cleaning
- o Hold Cleaning
- o Pollution Control

Design & Engineering

- o Fuelling Systems
- o Fuel Polishing Systems
- o Tank Repairs
- o Pipework Repairs

Fuel Specialist Services

Lower Quay
Newham Road
Truro
TR1 2SU

Tel: 0333 577 0001

info@fuelspecialistservices.co.uk

Fuel Services

- o Fuel Polishing
- o Fuel Conditioning
- o Fuel Transfer & Uplift
- o Fuel Sampling & Analysis
- o Fuel Supply
- o Oil & Water Separation
- o Temporary Fuel Storage

SEAWELD FABRICATIONS

Pushpits, Pulpits, Mast Fittings, Fuel Tanks

Stainless Steel, Aluminium & Mild Steel Fabrications Undertaken

No job too small

For quality and service - call in and see us

FREE QUOTES

Mylor Yacht Harbour, Falmouth, Cornwall TR11 5UF

TEL: 01326 373155

Email: seaweld@btconnect.com

www.seaweldfabs.co.uk

Contact:- Sandy Creeden

TBOA

Truro Boating Association



Founded in 1973

We organise winter and summer social programmes and at club level provide swinging moorings and winter layup ashore. (Subject to availability)

Call or email for further details

Website: www.tboa.org.uk

Email: tboacontact@aol.com

Phone: 07961925156

Facebook: Truro Boating Association



MYLOR MOORING
SERVICES LIMITED



Image: Michael Wilson

MARINE SERVICES

Mooring Installation & Servicing • Conservation
Mooring Solutions • Pontoon Installation,
Servicing & Maintenance • Inshore Diving •
Vessel Towing • Salvage • Waterside Deliveries •
Ship Supply Deliveries • General Marine Services

T 01326 373777 M 07743 926429

E office@mylormooringservices.co.uk

www.mylormooringservices.co.uk



WATERINGS BOATYARD

MYLOR CREEK

- Builders of Traditional Craft in GRP •
- General Boat Repairs •

SAM HEARD BOAT BUILDER

Tel: 07977 239341

Email: samheardmylor@hotmail.co.uk

LOE

BEACH

WATERSPORTS

CORNWALL

lessons & hire

www.loebeach.co.uk

LEARN & HIRE

| Stand Up Paddleboards

| Kayaks

| Motorboats

| Sailing Dinghies

| Row Boats

| Wetsuits

| Buoyancy Aids

Call: 01872 864295

Email: boat.hire@loebeach.co.uk



Loe Beach Watersports, Loe Beach, Feock, TR3 6SH

BoatshedCornwall.com

INTERNATIONAL YACHT BROKERS

SELLING OR BUYING A BOAT?

Full Service
Brokerage
Organisation



Global Reach
Local Presence

SOLD

20,000
Boats sold so far



**Big
Data**

Matches Buyers
with Sellers



SCAN ME TO DISCOVER MORE

SAIL AWAY ON THE RIGHT TACK

- 
- ◆ Galvanised Chain
 - ◆ Galvanised Anchors
 - ◆ Rope
 - ◆ Buoys and Fenders
 - ◆ Marine Paint
 - ◆ Tarpaulins
 - ◆ Weatherproof and waterproof clothing
 - ◆ Wellies & Waders
 - ◆ Fuel Line Fittings & Tanks
 - ◆ Stainless Fixings
 - ◆ Distress Flares
 - ◆ Life jackets and safety equipment

MACSALVORS LTD

THE BOATHOUSE PENRYN

01326 377131

POOL, REDRUTH

01209 212125

- 
- ◆ Charts and books
 - ◆ Fishfinders
 - ◆ Chart plotters
 - ◆ VHF radios
 - ◆ Oils and lubricants
 - ◆ Sealants and adhesive
 - ◆ Cleaning products
 - ◆ Marine electrics and electronics
 - ◆ Solar panels
 - ◆ 12V batteries
 - ◆ Outboards and Inflatables
 - ◆ Fishing tackle

Friendly and knowledgeable staff.

SEAWIDE SERVICES LTD.

Falmouth Wharves, North Parade, Falmouth,
Cornwall TR11 2TD

DIVING & SALVAGE CONTRACTORS MOORING SPECIALISTS

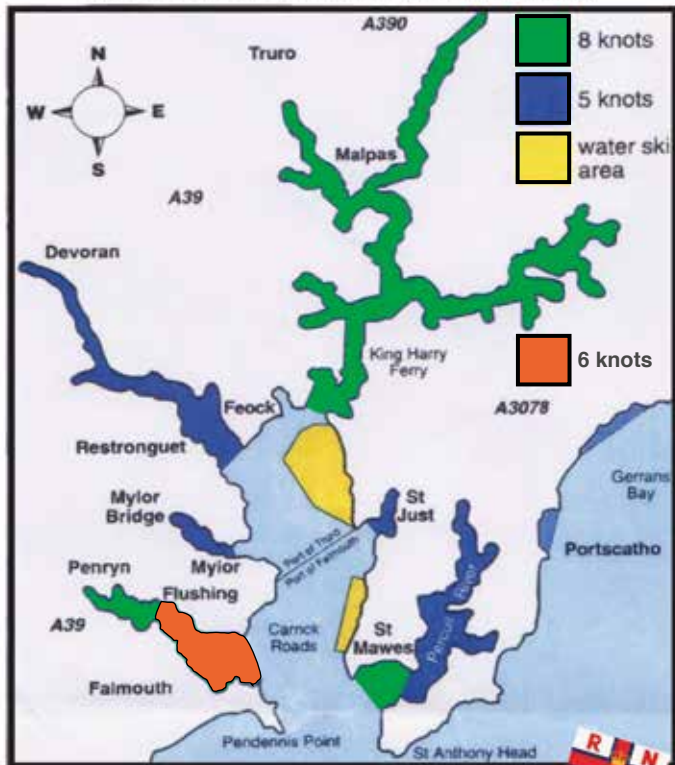
Contractors to :
Cornwall Council
Falmouth Harbour Commissioners
RNLI & MOD

Tel: 01326 317517
Mob: 07770 262649

Email: office@seawideservices.co.uk
www.seawideservices.co.uk

Speed Limits for the Falmouth Estuary

Issued by the Fal Estuary Marine Safety



SIX TIPS FOR A SAFE TRIP, REMEMBER IT'S WET

Inform: Tell others where you are going. **Wear a Lifejacket:** Unless in the locker.
Tides & Weather: Check before you go. **Engine & Fuel:** Check fuel and engine.
SOS: Carry a means of calling for help. **Training:** Essential for you and crew.

If you would like this information in another format or language please contact:
Cornwall Council, County Hall, Treyew Road, Truro TR1 3AY
e : equality@cornwall.gov.uk t : 0300 1234 100