

**SHORELINE SURVEYS LTD**  
 Hydrographic — Geophysical — Topographic  
 Morford Hall, Morston, Dorchester, Dorset, DT2 8BA  
 Telephone: +44 7950 028317  
 email@shoresurveys.com www.shoresurveys.com

**PROJECT:** Channel Assessment Survey  
 Scale: 1:1000  
 Date: 26/03/24  
 Drawn by: H.L.G.G.  
 Checked by: I.S.  
 Surveyed by: E.F.H.L.  
 Do not scale

**CLIENT:** Cornwall Council

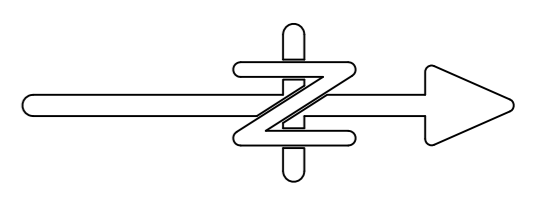
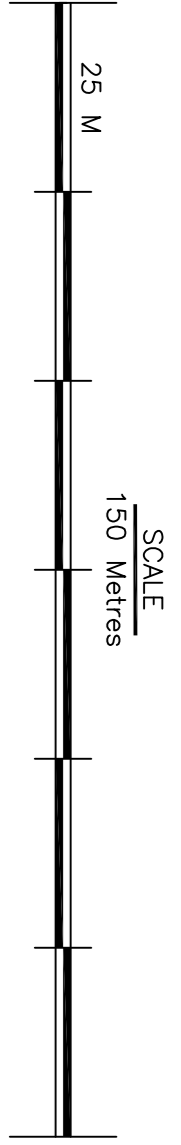
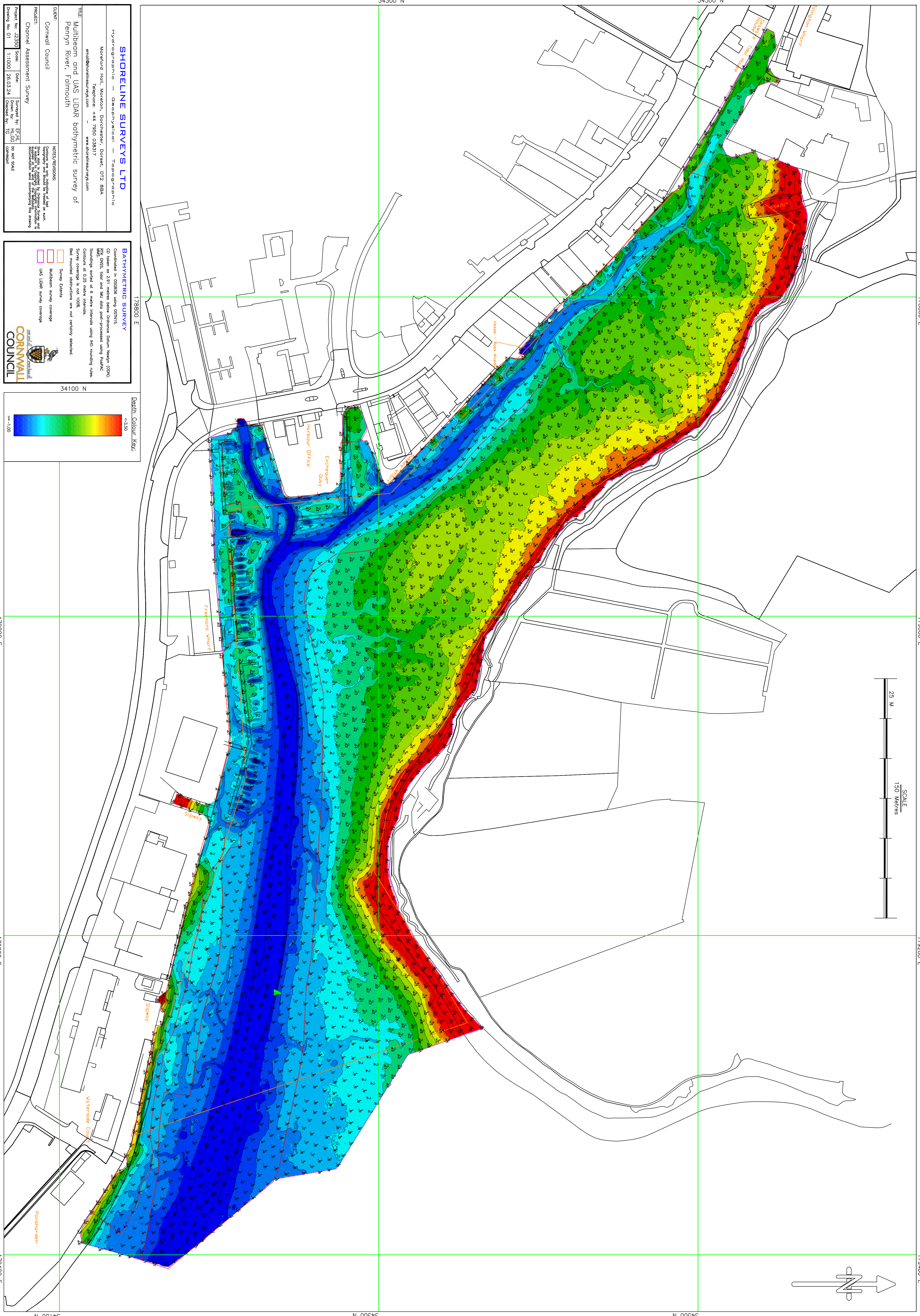
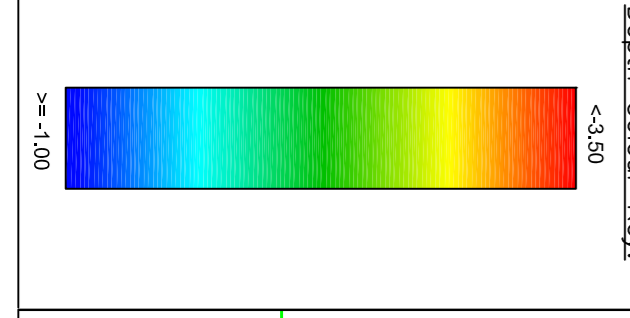
**TITLE:** Multibeam and UAS LIDAR bathymetric survey of Penryn River, Falmouth

**NOTES/REVISIONS:**  
 Contours are only shown at 1m intervals. Points are plotted at 1m intervals. Contour lines are shown at 1m intervals. Contour lines are shown at 1m intervals. Contour lines are shown at 1m intervals.

**BATHYMETRIC SURVEY**  
 Conducted in October using OSMs.  
 CD Values: 2.91  
 Mean Ordnance Datum Height (ODN).  
 RTK GPS. Use and tide data post-processed using Pppppp.  
 Soundings sorted at 6 metre intervals using HO rounding rules.  
 Contours at 0.25 metre intervals.  
 Survey coverage is not 100%.  
 Bed mounted obstructions are not currently detected.  
 Survey Extents

■ Multibeam survey coverage  
■ UAS LIDAR survey coverage

**CORNWALL COUNCIL**



17800 E 17900 E 17920 E 17940 E 34100 N 34300 N 34500 N